

I. Who We Are



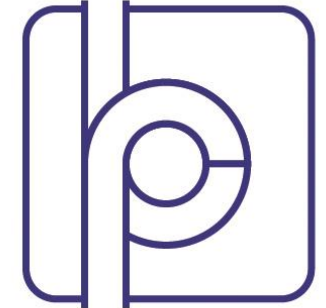
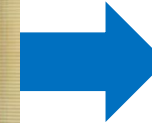
Zhuohua Lin (China),
Co-founder,
PhD f. Waseda大学



Klaus Petersen (Germany),
Co-founder,
PhD f. Waseda大学



Huei Ee Yap (Malaysia),
Chief developer,
PhD f. Waseda大学



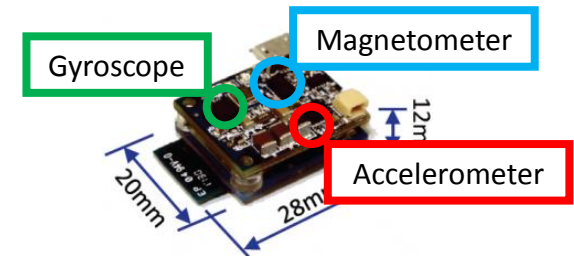
LIFE PERFORMANCE RESEARCH

株式会社LP-RESEARCH
Headquartered in Tokyo
and Guangzhou, China

II. What We Do



Hardware design and production
Focus: Motion sensors



Sensor fusion algorithm development



Multi-platform application development

I. LP-research Motion Sensor (LPMS) Hardware Design



LPMS-B



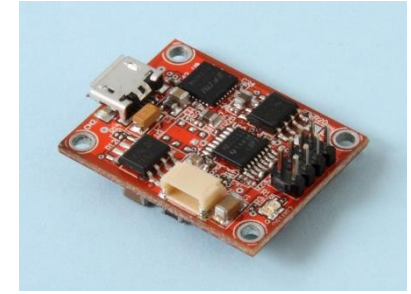
LPMS-CU



LPMS-CUR

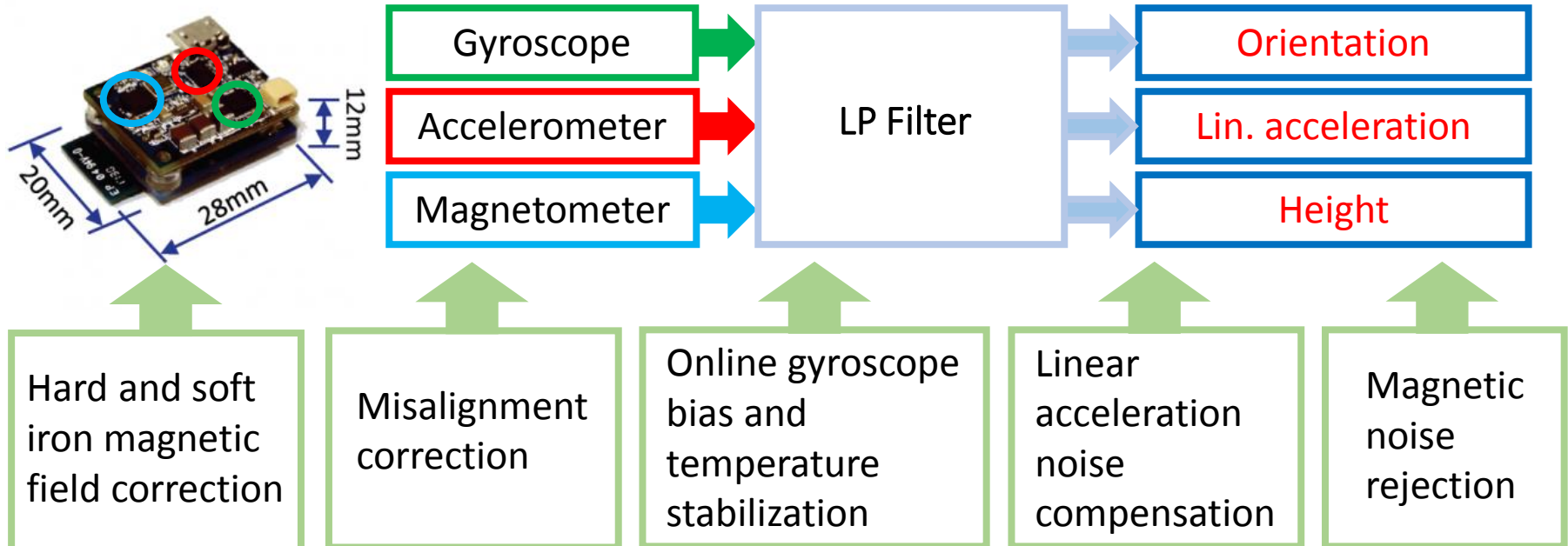


LPMS-USBAL



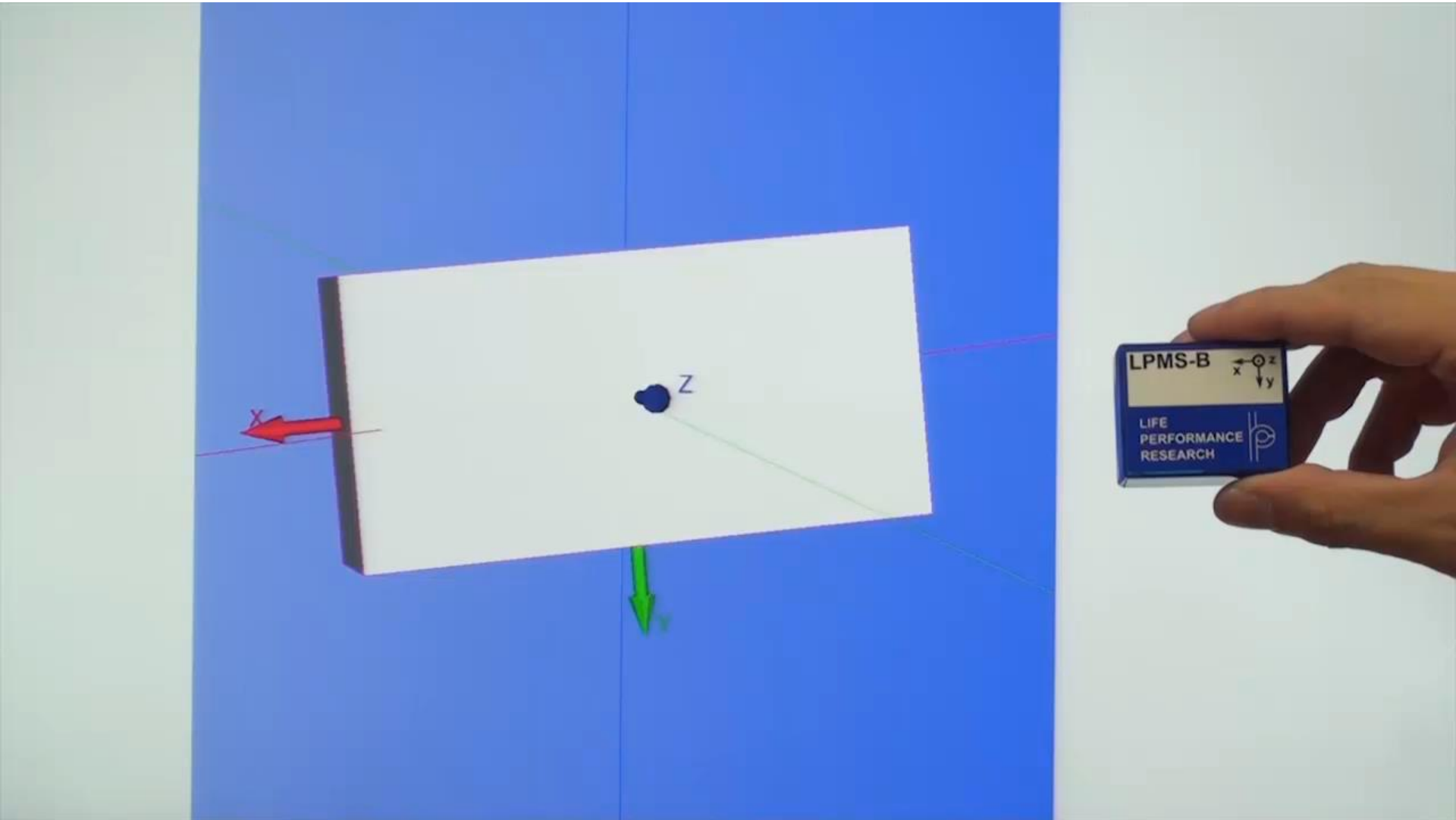
LPMS-CURS

II. Real-time, On-Device Sensor Fusion Algorithm





Simple 3D Cube Video



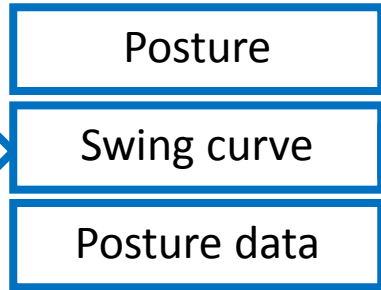
Motion Sensor Applications 1

Golf Swing Analysis

NEED: Swing information for more effective training



Motion data



User evaluation on smartphone

Development Partner:



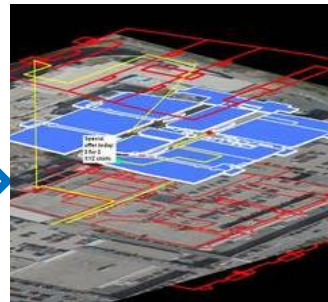
Indoor Navigation



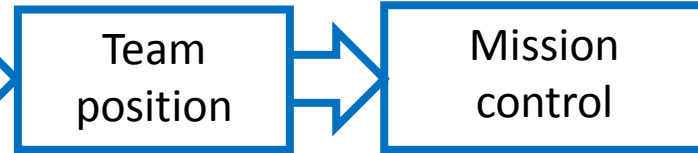
Firefighters



Gait analysis



Environment map



NEED: Location of firemen / police teams inside building (no GPS reception)

Development Partner:



AIONAV, Austria / Switzerland

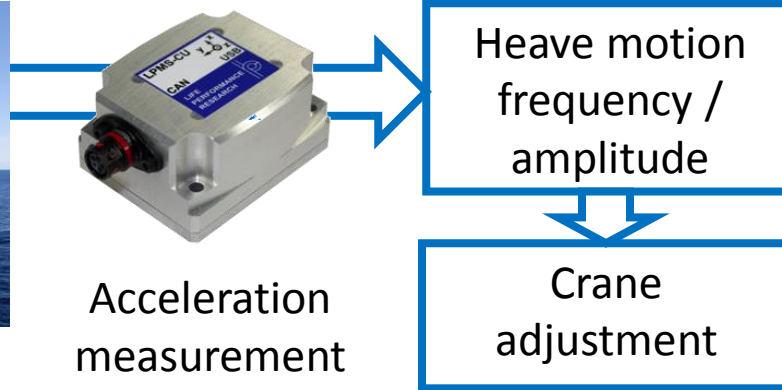
Motion Sensor Applications 2

Payload Heave Motion Tracking

NEED: Stability of payload must be guaranteed under all sea conditions



Off-shore installation



Acceleration
measurement

Heave motion
frequency /
amplitude

Crane
adjustment

Development Partner:



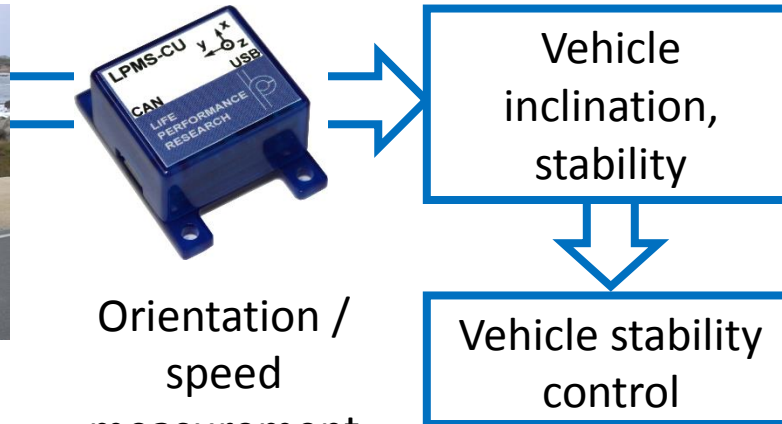
Scotload, England

EV Drive Control

NEED: Vehicle controller system must know car dynamics to steer correctly



Electric vehicle



Orientation /
speed
measurement

Vehicle
inclination,
stability

Vehicle stability
control

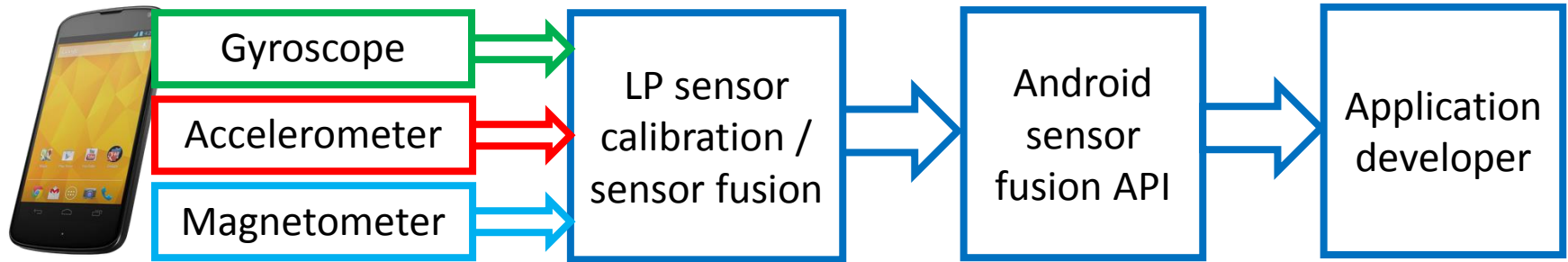
Development Partner:



Borgwarner, Sweden

Motion Sensing Middleware for Android

NEED: Motion sensing essential for competitive smartphone product



Smartphone

Development Partner: **Panasonic**

Front Loader Control

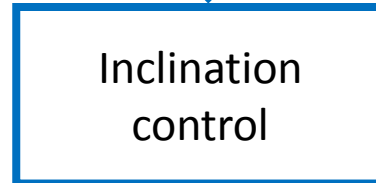
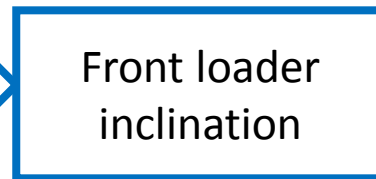
NEED: For exact adjustment of the front loader, inclination feedback is required



Front loader



Gyroscope +
accelerometer
sensor fusion



Development Partner:



Alo AB, Sweden

World's leading manufacturer
for front loaders

Virtual Reality 3D Glasses



VR Goggles



Kalman filter
sensor fusion



Head
orientation



Image
adjustment

Development Partner:



Canon, Japan

NEED: Orientation of head must be tracked to display realistic image

Full-body Motion Capture

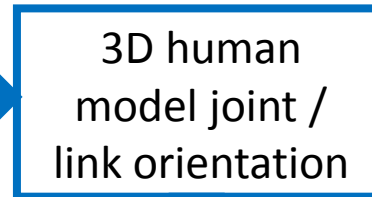
NEED: Full human body motion must be tracked for sports evaluation



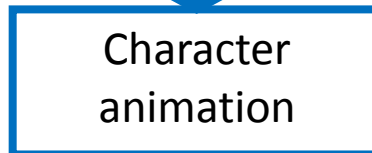
Dancer with sensor-suit



Motion
measurement
via Bluetooth



3D human
model joint /
link orientation



Character
animation

Development Partner:



Lemonade Labs,
Japan

Augmented Reality Video

LpGlass (prototype)
Orientation tracking demo
(c) LP-RESEARCH Inc.





Gait Tracking Video



Full-Body Motion Capture Video

Full Body Motion Capture
(c) LP-RESEARCH Inc.



3D Animation



Human Model